

2024 ANNUAL REPORT

"Hands of Mercy, Hearts of Service"



Catholic Charities
Diocese of Paterson
www.CCPaterson.org

Catholic Charities, Diocese of Paterson,
provides help and creates hope throughout Morris, Sussex
and Passaic Counties in New Jersey and operating
satellite programs in 5 additional counties.

In 2024, we served over 45,000 people.
We go where the need is and meet people where they are.

Catholic Charities, Diocese of Paterson

Who we are

A vast ministry within New Jersey

Out of nearly 41,000 New Jersey 501(c)(3) organizations, less than 0.3% operate at our size and scope. Our many programs allow us to assist entire families, offer a wide range of services, and support those in need with a variety of resources.



A proud Catholic Charities USA Member Agency

Of 167 Catholic Charities USA agencies throughout the country, we feature in the top 15 in both budget size and total number of employees.



3 Agencies - 1 Mission

Straight and Narrow, Catholic Family and Community Services, and the Department for Persons with Disabilities make up Catholic Charities, Diocese of Paterson. Our agencies work collaboratively to provide help and create hope for those in need.



Read about who we are, our place in society, and our
2024 "Hands of Mercy, Hearts of Service" in this annual report.

Visit our website at www.ccpaterson.org
to learn even more about our vast and vital ministry.

The Diocese of Paterson

The Diocese of Paterson comprises New Jersey's three northwest counties of Morris, Passaic, and Sussex, with an area of 1,214 square miles and a population of 1,134,000.

The Holy See created the Diocese in 1937 by separating these three counties from the archdiocese of Newark.

Bishop Kevin J. Sweeney is the leader of the Diocese of Paterson and was installed as the eighth bishop of the Diocese in July 2020.

The Diocese counts some 430,000 Catholics in a rich tapestry of 109 parishes where Mass is offered in 14 different languages and is a good neighbor to five Eastern-rite Churches.

The Diocese of Paterson includes 22 Catholic Schools, our 70 Catholic Charities programs, and various ministries in the three counties of Passaic, Morris, and Sussex in northern New Jersey.

We are grateful to the Diocesan faithful who support our impactful ministry.

Catholic Charities is a 501(c)(3) nonprofit organization that serves based on need, not creed. We help all who come to our door regardless of their religious beliefs.





DIOCESE OF PATERSON

Diocesan Center
777 Valley Road
Clifton, New Jersey 07013

(973) 777-8818 Fax (973) 777-8976

Office of
THE BISHOP

June 12, 2025

My brothers and sisters in Christ,

The Servant of God, Dorothy Day, gauged effective charity in this way, "Don't worry about being effective. Just concentrate on being faithful to the truth." Presenting this *Annual Report* on the activities and ministry of Catholic Charities of the Diocese of Paterson is an expression of the gospel in action. Our commitment to the truth is our dedication to making Christ known through tangible care. The effectiveness of the mission is evident because of the faithful devotion of the Catholic Charities family, who trust in the power of God's love. Our standard of measure for success is that of the Lord Jesus himself, "Those who love me will keep my word, and my Father will love them, and we will come to them and make our home with them" (John 14:23).

As you leaf through the pages of this *Report* and reflect upon the myriad of healing and sustaining services provided, you will find the optimism that active faith inspires. In his homily for the Mass inaugurating his pontificate, Pope Leo XIV expressed his hope that the Church will ever recommit herself to an evangelization rooted in Christ-like self-giving. As the Holy Father noted, "We want to say to the world, with humility and joy: Look to Christ! Come closer to him! Welcome his word that enlightens and consoles! Listen to his offer of love and become his one family: *in the one Christ, we are one.*" Thank you for your generous support of Catholic Charities, which helps to bring unity to the human family.

With you, I express my gratitude to all of the leaders and agency members of Catholic Charities who bring a sense of vocation and mission to their daily work. Through their generosity of time and spirit, they are the healing power of God's grace in our midst. Thank you, members of the Catholic Charities family! Thank you as well to all of those who contribute to this work.

No time in human history is without challenge and struggle. However, we take heart in the goodness of God in our midst. This *Report* is a vivid portrait of the good accomplished when we unite our efforts to serve the broken, the poor, and those who would be lost without our willingness to provide refuge and direction.

With every good wish and a prayer for the Lord's blessing, I am

Devotedly yours in Christ,

Most Reverend Kevin J. Sweeney, D.D.
Bishop of Paterson

Board of Trustees Faithful Leadership

Catholic Charities, Diocese of Paterson

In November of 2017, a new single Board of Directors replaced the existing Department for Persons with Disabilities, Straight and Narrow and Catholic Family and Community Services Boards. The board members applied for the new positions and were appointed from Diocesan Leadership and the existing Catholic Charities Boards.

The past 6 years have been exciting and fruitful as we continue to come together to help those most in need.



Catholic Charities 2024 Board Members

President:

Rev. Martin Glynn

Vice President:

Dennis Murray

Treasurer:

Sole Anselmi

Secretary:

Michael Calabrese

Trustees:

Most Rev. Kevin J. Sweeney

Dr. Michelle Baron-Romans

Edward Madzy

Timothy Potter

Rev. Edward Reading

John Sullivan

Deacon Peter Cistaro

Paul Wittekind

James Sweeney

Msgr. Herbert Tillyer, Board Chair Emeritus

The Catholic Charities Board of Trustees operates under applicable laws of the State of New Jersey in order to assure that the operation of the Department for Persons with Disabilities, Straight and Narrow and Catholic Family and Community Services is done with integrity and high ethical standards.





Dear Friends and Supporters,

As I reflect on 2024, two words come to mind: transformation and hope.

Your extraordinary generosity has enabled Catholic Charities to not only continue our vital mission but to expand our capacity to serve in ways we never imagined possible. This has been a year of remarkable growth and renewal—one that positions us to make an even greater impact in the years ahead.

Rising from the ashes of the devastating 2019 fire at Straight and Narrow's 410 Straight Street facility, we are now well into our \$30 million rebuild. This state-of-the-art treatment center, scheduled to open in 2025, will provide cutting-edge care for individuals battling addiction while honoring the legacy of hope that has defined this program for decades.

At Catholic Family and Community Services, your support has made possible a complete \$4.5 million transformation of the Father English Food Pantry. What was once a traditional food distribution center will become a modern, choice-model facility that preserves dignity while meeting the growing needs of families throughout our community. Visitors will be able to shop for groceries in a welcoming environment that feels more like a neighborhood market than a charity.

Our Department for Persons with Disabilities is putting the finishing touches on a new, accessible ranch-style home for our cherished Murray House residents. This thoughtfully designed space will ensure that aging adults with developmental disabilities can continue to live safely, comfortably, and with the independence they deserve in a place they call home.

These and other transformational projects represent more than bricks and mortar—they embody our unwavering commitment to human dignity and the belief that every person deserves access to quality care, nutritious food, and a safe place to call home.

The scale of impact we've achieved this year is unprecedented in our organization's history. Yet what moves me most is not the size of these projects, but the lives they will touch. Each renovation, each new facility, each improved program represents countless individuals and families who will find hope, healing, and help when they need it most.

These accomplishments, born from both necessity and vision, stand as powerful testimony to what we can achieve when community and faith unite for the common good. They remind us that even in our most challenging moments, we are called to build something better—not just for today, but for generations to come.

On behalf of our Board of Directors, our dedicated staff, and most importantly, the thousands of individuals and families we serve, thank you for making this transformational year possible. Your partnership in this sacred work continues to inspire us every day.

With profound gratitude and hope for the future,

Scott Milliken

Scott Milliken, CEO
Catholic Charities, Diocese of Paterson



Catholic
Charities
USA®

DISASTER RESPONSE



Working to Reduce Poverty in America.

Catholic Charities New Jersey and USA

Our place in our state and nation

www.catholiccharitiesusa.org

Catholic Charities, Diocese of Paterson is a proud member agency of Catholic Charities USA. Catholic Charities USA was founded over a century ago by men and women who believed the collective efforts of the church to faithfully serve people in need could change the course of poverty in our nation.

There are **1,700** local Catholic Charities and institutions nationwide that help over **10 million** people annually regardless of religious, social, or economic backgrounds. We work collaboratively with our Catholic Charities New Jersey neighbors to provide help and create hope for so many. **We are the largest Catholic Charities agency in New Jersey and one of the most robust in the entire country.**

We continue to work with CCUSA to help those most in need. CCUSA offers leadership, development, advocacy and support to our organization. In 2024, we are proud to have been selected for the CCUSA 'Stories of Hope' campaign and to participate in the 'We are there' national campaign.





New Jersey State Council on the Arts, Sparky Seniors Program.



FM Kirby Foundation's team visit and tour of Hope House programs in Dover.



Spotlight on Funders

Thank You for Your Generosity and Partnership!

Catholic Charities, Diocese of Paterson, is deeply grateful for the extraordinary generosity received between July 1, 2024, and June 30, 2025, which totaled **\$3,713,662**. The remarkable support from individual donors, Diocesan faithful, corporate allies, grant funders, volunteers, and community partners enable us to bring help and create hope for thousands of vulnerable individuals and families across our communities.

Highlights from This Year's Gifts and Grants

Grant Support:

- The F.M. Kirby Foundation and Troxel Family Foundation provided critical funding for Hope House's Unmet Needs Fund, preventing homelessness among seniors and families
- Newton Medical Center Atlantic Health System supported the Partnership for Social Services Friendly Visitor Program for isolated seniors
- Somerset Hills Community Health Foundation funded the Chore & Fix-It Program, helping seniors age safely in place
- NJ State Council on the Arts Creative Aging Initiative brought 16 joyful art sessions to the Paterson Adult Day Center
- Church of Christ the King's "We Care We Share" Grant supported Mary's Hands ministry for new mothers and babies

Transformative Individual Giving:

- Two anonymous donors contributed a remarkable \$200,000 to the Bob Jacob Unmet Needs Fund
- A generous estate gift expanded the Fr. English Food Pantry's capacity to serve families with dignity
- A generous estate gift will allow the creation of a brand-new group home

Community-Driven Success:

- Our Clothing Donation Boxes raised over \$200,000 through ongoing parish support
- The Corpus Christi Food Drive collected 16,925 pounds of food from 110 parishes and schools—providing more than 14,000 nourishing meals
- Vehicle Donation Program generated \$53,365 in support
- Over 44,000 hours of time and talent were logged by hundreds of caring volunteers

We are endlessly thankful to the sponsors, attendees, and supporters of our cornerstone events: Wiegand Farm Golf Classic, NJ Army Tank Pull, Caritas Gala, Beefsteak Dinner, and many others. Your enthusiasm and commitment are vital to our success and mission.

Capital Projects Coming Soon in 2025 to 2026

Looking forward to 2025 and beyond, Catholic Charities Diocese of Paterson is working hard on numerous capital projects and facility upgrades:

New in 2025

- New Father English Food Pantry, Paterson
- New Murray House, Clifton
- New Wehrlen House, Randolph
- New Rehabilitation Center, Paterson
- New Medical Day Program, Paterson
- New Administrative Office, Parsippany

New in 2026

- Smitheman House

These improvements reflect our unwavering commitment to empowering and uplifting those we serve, today and in the years to come.

Thank you to our generous donors who contributed gifts to our capital projects. With your support, together we can continue our commitment to empowering and uplifting those we serve, today and in the years to come.





Straight & Narrow Rehabilitation Center
Commercial Kitchen



The Father English Food Pantry and Community
Center, currently under construction.



Straight & Narrow Rehabilitation Center Exterior



The new Murray House, coming in 2025.

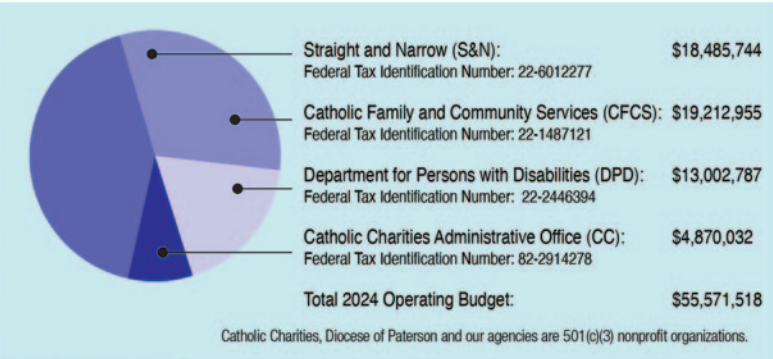
By the Numbers

Catholic Charities, Diocese of Paterson

To learn more about our incredible impact please visit: ccpaterson.org



Our 2024 Operating Budgets and EINs



3,643
Number of Volunteers



37
Total number
of distinct programs
offered



Thanks to the support of generous donors, volunteers, foundations, service groups, the Diocese of Paterson faithful and friends, we were able to provide help and create hope for more people than ever before.

2024

44,241
Volunteer hours

\$2,084,664

Emergency Financial Assistance provided

45,207

Unduplicated number of clients served through
our 3 agencies



8,741 Children served through our ELP's, Youth and Early Intervention programs; (4) Early Learning Programs 627, Youth At Risk: 81 & TET/CM/SC: 8,033

2,507 Clients served through S&N programs:
Residential/Detox/HWH/IOP/OP programs: 1,270
Family Success Center: 1,087 & Apartments: 25



31,288

Clients served through
our 3 food pantries

19,232

Meals on Wheels
meals distributed among
174 clients



313

Clients served through
DPD programs/
group homes

3 Agencies

that make up our vast organization:
Straight and Narrow, Catholic Family
and Community Services, and the
Department for Persons with
Disabilities





Straight and Narrow

www.ccpaterson.org/sn

Executive Director:
Angela Nikolovski, MS, LPC, LCADC
508 Straight Street
Paterson, NJ 07501

Telephone: (973) 345-6000
Fax: (973) 345-7279
Email: info@straighthandnarrowinc.org

Straight & Narrow (S&N) has served the community since 1954 by aiding individuals struggling with substance use and co-occurring disorders. S&N promotes healthy cognitive development, education for children, and encourages family participation. Our experienced, dedicated staff provide holistic, compassionate care for individuals, their families, and the community. S&N leads through innovation, best practices, and community partnerships, ensuring access to services that are equitable, person-centered, and transformative.

S&N is one of the oldest and largest organizations of its kind in the country, providing:

- Long-term Residential treatment for adult men and women
- Long-term Residential treatment for pregnant women and women and children
- Detoxification Treatment services for adults
- Medicated Assisted Treatment
- Halfway House for Male Recovery Court Clients
- Outpatient Treatment Services

Many clients face co-occurring disorders, and some are referred by the criminal justice system.

Straight & Narrow's community-based services include permanent supportive housing for individuals with specialized medical conditions and Family Success Center.

Highlights of 2024

Straight and Narrow continues to expand and improve:

- Increased Admissions at all levels
- Over 100 clients attended the Men's Long-term residential program during August & September 2024
- Increased Mommy & Me enrollment from 11 in December 2023 to 23 in December 2024
- Welcomed walk-ins
- Provided medical consultations
- Collaborated with outside clinics and providers for services
- Establish working relationships with stakeholders, providers, and community
- Identified barriers to treatment and implemented transportation to expedite admission
- Implemented new Electronic Medical Records System
- Began daily screener meetings
- Provided commissary to newly admitted detox clients
- Attended outreaches in the community to explain our services

We'll continue to survey clients' experiences during admission and will conduct surveys during the program. Client surveys are very gratifying:

"Very professional and helpful"

"Admission Counselor answered all my questions and concerns."

"Staff was very kind."

"Staff made admission very easy to understand."

"Professional, polite and welcoming"

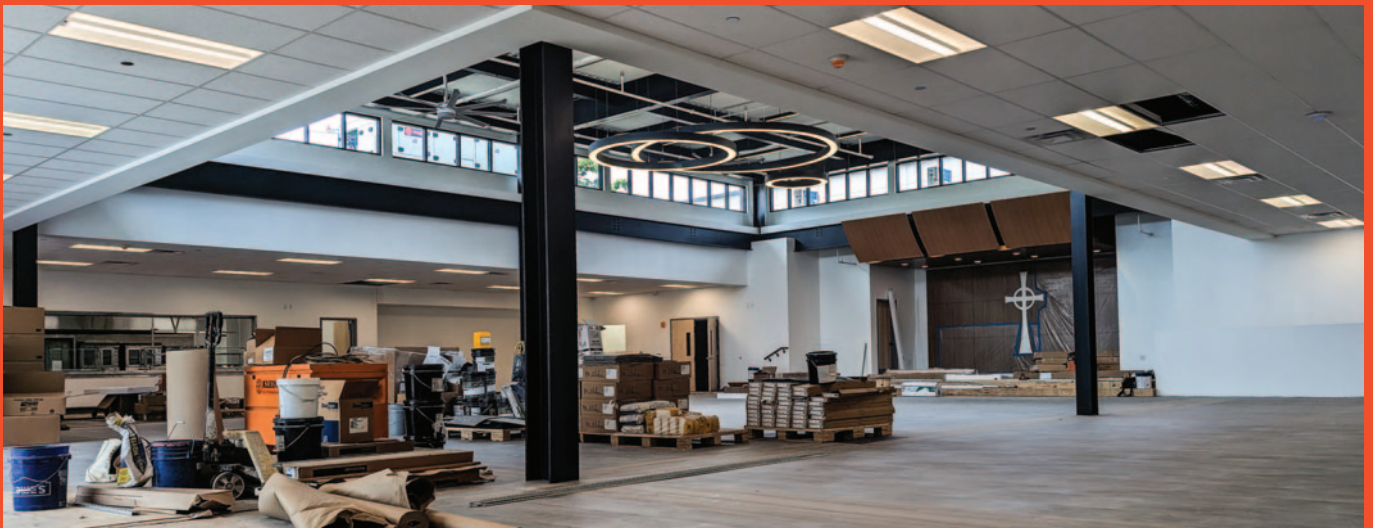


Construction Project Updates

Straight & Narrow's new 55,000-square-foot campus-style facility will centralize services and better meet client needs. The 410 building will include a 50-bed men's halfway house, clinical and administrative offices, outpatient services, pastoral care, food service, and more. This facility is in line with Paterson's revitalization efforts by bringing redevelopment to the local neighborhoods. Our facility will be a safe haven with all client services in one location. Most major systems are installed, and interior work is underway; completion is expected by Fall 2025.

We are also expanding preventive care with a new Medical Day Care Center at 380 Straight Street, offering medical engagement, counseling, case management, transportation, and other supports. Construction is progressing steadily, with rough electric, plumbing, and exterior work complete, and elevator and HVAC installation underway.

This project is on track for a Fall 2025 completion.





Admissions and Detox Medical Unit

at **Straight and Narrow**

Central Intake accommodates Detoxification, Short-term Inpatient, Long-term Inpatient, Halfway House, Intensive Outpatient, and Outpatient, based on a history review and ASAM criteria.

Funding eligibility is evaluated through the DASIE (DAS Income and Initiative Eligibility) process. Admission is based on availability, with walk-ins welcomed. No medical insurance is needed—S&N offers free treatment through public funding.

Our Detox Program offers 24/7 medically supervised withdrawal management, with over 30 medical professionals providing comprehensive care and symptom monitoring:

- Admission wellness physicals
- Psychiatric evaluations and treatment
- An addiction psychiatrist
- Medical care for acute and chronic conditions
- HCV/HIV screening, testing, counseling, and treatment
- Dietician assessments, recommendations, and education
- Pre-/post-natal care for mothers and wellness visits for babies

Two additional doctors visit twice a week, and outside providers offer weekly dental and podiatry care. The Medical Team trains staff and handles emergencies.





Straight and Narrow Saving Lives



70 years

Providing Recovery Services



860

Total number of unduplicated
admissions in 2024



1,221

Total Admissions,
of which 860 were unduplicated

Residential Treatment Services

at Straight and Narrow

Straight & Narrow has expanded **Medication-Assisted Treatment (MAT)** across programs, ensuring prompt access at admission to support recovery and retention. We've partnered with external providers to offer all FDA-approved options. MAT is now fully integrated into our residential and halfway house programs, with growing use of long-acting injections shown to improve outcomes. An ASAM-certified addiction physician provides specialized care for pregnant clients to ensure maternal and infant health.

KIPU, our new, modern, efficient **electronic health record (EHR) system**, enables real-time information sharing across all disciplines within our agency. Customized templates, improved compliance, and streamlined billing have enhanced patient care.

Success Story

Noah, a client in recovery, shares that learning patience has been key to rediscovering himself. Over the past six months in the program, he's come to appreciate how S&N has helped him build a safe, healthy routine. He has adopted a new approach to life—staying present and valuing the moments he shares with others.





Straight and Narrow Inpatient Programs



53%

Successful completions of Residential Services



50% employed

Halfway House client population employed*
*Rates in-line with state data.



14 newborns

Welcomed at the Alpha 3 program, 100% healthy births



8 reunified

Mothers and children through Mommy and Me
program (91% success rate)

Outpatient Treatment and Residential Life Associates

at Straight and Narrow

The **Intensive Outpatient (IOP) and Outpatient (OP) programs**, which run in the evenings, use evidence-based curriculums tailored to clients' goals and progress. IOP includes three 3-hour group sessions per week, plus one individual session, totaling 10 hours of treatment weekly. OP offers one or two 90-minute groups per week, plus bi-weekly or monthly individual sessions.

Referrals come from probation, parole, Recovery Court, DCP, DUI, and self-referrals. We work closely with local agencies like DCP&P, Passaic County Recovery Court, and IDRC to support clients' reintegration into the community. Successful completion rates meet or exceed state averages.

Residential Life staff work closely with the Clinical Team to coordinate with worksite supervisors, attend clinical meetings, and help implement interventions for consistent care. Key duties include supervising clients, managing communications, organizing activities, monitoring visits, and conducting drug screens.

Staff's main focus is hands-on supervision, promoting accountability and positive behavior through structured, therapeutic guidance. The "Client Representative" role supports this effort by maintaining order, encouraging accountability, and promoting self-esteem within the community.





Straight and Narrow Outpatient Programs



248 clients

Enrolled in Medication
Assisted Treatment



500,000+

Dosages of Medication Distributed
Annually at Straight and Narrow



1,200

Families provided services at the
Family Success Center, 814 were new to
the Center.

Residential Treatment

at Straight and Narrow

Women's Residential Treatment

We offer evidence-based care through group therapy, psychoeducation, and recreation to help women develop sober living skills, address trauma, and prevent relapse. Co-occurring support includes psychiatric monitoring and counseling. Clients enjoy yoga, meditation, fitness, and 12-step meetings, both in person and virtually.

Activities included trips to Bergen PAC, Turtleback Zoo, and more, ending with a Holiday Express celebration. Case managers track progress and celebrate milestones.

Mothers in Alpha III benefit from regular visits with their children through DCP&P, achieving a **91% reunification rate and 100% healthy births**—exceeding state goals. Gymboree classes support bonding twice weekly. We partner closely with DCP&P and Safe Babies. Family visits occur twice a month.





Men's Residential Treatment

Our Men's Program blends clinical care, peer support, and life skills to prepare clients for recovery, with co-occurring services and medication management.

In 2024, we relaunched in-house peer support and virtual AA/NA. Daily groups include music, art, spirituality, and counseling. Halfway House residents accessed jobs, education, and life skills through partners like Stew Leonard's and NJ Reentry.

Alumni inspire current clients through the Star's Group, Speaker Jams, and sobriety celebrations.

Activities & Outings

Our department promotes work-life balance through regular off-site outings like movies and shows at Chatham Playhouse and Bergen PAC. This holiday season, clients—many celebrating their first sober holiday—enjoyed a joyful "Holiday Express" event with carols, Santa visits, and festive cheer. Male residents also attended The Nutcracker for a night of entertainment and connection.

We believe recovery should include joy and hope. In-house activities like pool, ping pong, games, books, and recovery groups help ease stress and build community. Clients also engage in virtual AA/NA meetings, workshops, and events via Roku and YouTube.

Vocational and educational training adds structure and skills, preparing clients for life beyond treatment.



Straight and Narrow Community Support Programs

- Family Success Center
- Apartments 1 and 2
- Prospective Medical Day Care Program
- Pastoral Care

Straight and Narrow is the largest nonprofit drug and alcohol treatment center in the country, helping over 1,500 people in recovery each and every day.

In addition to these extensive services Straight and Narrow operates permanent supportive housing (Apartments I and II), and the Family Success Center all located in Passaic County.

Pastoral Care staff integrate spirituality with the client’s clinical care plan, helping each person come to know who they are through their relationship with their Higher Power. Religious services are provided for multiple faiths with the help of local Ministers, Imams, and Rabbis, in addition to our own pastoral care priests and staff.

These programs assist hundreds of individuals and families each day. Straight and Narrow is proud to provide a wide range of diverse offerings to our community.



Family Success Center and ELPs

at Straight and Narrow

The **Family Success Center** served over 1,200 families — 814 of them new — and continues to provide both virtual and in-person services. The center offers parenting classes in English and Spanish, support groups, health and life skills workshops, holiday events, family activities and community giveaways, which have become a staple of Paterson's community life.

After 20 years of service, **La Vida Child Center Too**, an early learning program for Paterson's preschoolers, closed in June 2024. Declining enrollment due to expanded public preschool options and changing demographics made it unsustainable for it to continue. At closure, La Vida Too served 120 children across eight classrooms, providing nurturing, child-centered, education led by experienced teachers in a supportive environment.





**Straight and Narrow
Early Learning and Family Success**



18 parents

Completed a 10-week Parenting Course

.....



275 children

Received School Supplies

.....



256 coats

Were distributed to children

.....



275 children

Received Toys

Supportive Housing and Construction Projects

at Straight and Narrow

Supportive Housing

Our Tenant Program provides permanent supportive housing for homeless individuals with special health needs, offering housing, advocacy, counseling, and support services. In 2024, 390-Apts I reached full occupancy, with 380-Apts II at 47%, requiring collaborative efforts for full occupancy. Events like the Pop-Up Pantry and collaborations with Amerigroup helped residents access essential items and insurance services. Continued partnerships with CAPCO Rise and the client voice advisory board continue to be an integral part to our mission.

Construction Projects at Straight and Narrow

Construction Projects at Straight and Narrow involve building a modern Medical Day Care Center at 380 Straight Street, with construction expected to last 6 to 8 months. Project drawings for the 410 facilities are finalized and submitted to the State's Department of Community Affairs, with zoning and planning board approvals secured. Upon final county approval and city permits, site work will commence at the 410 facilities, ensuring effective community service for years to come.





Straight and Narrow Supportive Housing



37.6% poverty rate

Child poverty rate in Paterson



73 units

Of supportive housing units offered
at Straight and Narrow



100+ people

We plan to assist over 200 individuals
(with advanced medical needs) daily at our
Medical Day Care Program



Columbia
Bank

 **Team
Columbia**
Columbia Bank

Catholic Family and Community Services (CFCS)

Executive Director:
Joseph Murray, M.Ed
435 Main Street
Paterson, NJ 07501

Telephone: **(973) 279-7100**
Fax: **(973) 523-1150**
Email: **CFCSinfo@catholiccharities.org**

Since 1946, Catholic Family and Community Services (CFCS) has supported individuals and families in need across Passaic, Morris, and Sussex Counties in New Jersey. As a multi-service agency, we provide essential support to marginalized individuals striving for stability. By addressing basic needs—food, shelter, clothing—and offering education, advocacy, and community-building, we fulfill our mission of service.

This annual report highlights our agency’s effectiveness in meeting the growing needs of our communities. In 2024, inflation, a worsening housing crisis, and global instability deeply affected those we serve. Yet, thanks to the tireless work of our staff and volunteers—and the generosity of donors, parishioners, foundations, and grant makers—we brought hope to over 20,000 people.

We are deeply grateful to all who make this work possible. Your support fuels our impact and sustains the meaningful, mission-driven work that continues to transform lives across our region.



Pastoral Ministry and Volunteers

at Catholic Family and Community Services

Pastoral Ministry shares the beliefs and social teachings of the Catholic Church through agency services and outreach. Led by Sister Maureen Sullivan, SC, the ministry offers prayers, reflections, and religious celebrations, providing spiritual support for staff, volunteers, clients, and benefactors. It also advocates for social change aligned with our mission.

Volunteers are essential to CFCS, playing a vital role in delivering services that would not be possible without their dedication. Under the guidance of Sister Maureen, volunteers bring time, talent, and heart to our mission. They come from parishes, schools, civic groups, and beyond—each helping uphold the dignity of those we serve.

In 2024, 3,520 volunteers contributed over 42,000 hours. Their efforts included distributing food, delivering meals to seniors, mentoring youth, organizing holiday events, and much more. We are deeply grateful for these compassionate individuals who continue to make an extraordinary impact across our communities.





CFCS Our Volunteers



\$34.79

Value of a volunteer hour

*as per the Independent Sector



3,520 volunteers

at CFCS



42,000+ hours

Total hours of service

Early Childhood Assessment and Intervention

at Catholic Family and Community Services

In 2024, CFCS's **Early Childhood Assessment and Intervention** department served nearly 10,000 children and families through the New Jersey Early Intervention Services program. This program supports infants and toddlers with developmental delays or disabilities—laying a foundation for stronger cognitive, emotional, and academic growth.

The **Targeted Evaluation Team (TET)**—comprised of specialists like speech-language pathologists and physical therapists—served 8,346 children through 15,411 service contacts in Passaic, Bergen, and Essex counties. Working with the Service Coordination Unit, TET conducts evaluations to determine eligibility and coordinate services.

The **Service Coordination Unit** facilitated Early Intervention services for over 1,300 children in 2024, developing personalized family service plans and ensuring progress is tracked and transitions to public school systems are supported.

Additionally, CFCS Case Managers provided long-term support for 601 children and youth with developmental or medical challenges, connecting them with services and tracking outcomes from birth through age 21.





CFCS
Support during the first years



8,430 families

Were provided Early Childhood Intervention Services

.....



5,773 served

Served through our TET program
& 16,865 service contracts

.....



2,445 children

Coordinated through SCU (Service Coordinator
Unit) involved in Early Intervention

.....



601 children

And their families received services from
our CFCS Case Managers

Early Childhood Education

at Catholic Family and Community Services

Catholic Family and Community Services operates three **Early Learning Programs (ELPs)** focused on the social, emotional, cognitive, and physical development of young children. In 2024, the ELPs educated 553 children and supported their families, meeting or exceeding benchmarks in staffing, student achievement, and attendance.

Each classroom has certified teachers—many with advanced degrees and specializations in areas such as special education, bilingual education, and reading—and is supported by assistant teachers with relevant degrees and credentials.

Families are an essential part of the ELP model. CFCS offers monthly parent workshops, regular family-teacher conferences, and referrals to community resources. To support working parents, before- and aftercare options are available. Parents are encouraged to take part in classroom activities, learning alongside educators to better support their child's development at home.

These comprehensive services promote school readiness and lifelong learning for children and families alike.





CFCS
Early Learning Programs



3 preschools

Operated by CFCS in Paterson, NJ



10 hour

Daily support for working families
(including before and after care)



556 children

Between the ages of 3-5 assisted at our
Early Learning Program

Youth Risk Reduction

at Catholic Family and Community Services

The CFCS **Youth Risk Reduction Department** comprises two longstanding programs: the Outreach to At-Risk Youth (OTARY) Program in Paterson and the Youth Services Program in Passaic, boasting over 50 years of operation. These initiatives offer youths, aged 9 to 18, a comprehensive array of services including tutoring, character education, conflict resolution, sports, field trips, life-skills training, homework assistance, mentorship, counseling, career development, community service, financial literacy courses, and robotics. Operated within a safe environment bolstered by a positive support system, these programs effectively deter gang involvement, crime, drug use, and other detrimental behaviors and served 81 children and their families.

The robotics initiative in collaboration with mentors from Don Bosco Prep High School continued in 2024. Participants receive hands-on training in robot building, programming, and operation, fostering inspiration and motivation while exploring careers in engineering and STEM fields. We proudly reached the semifinals in multiple competitions this past year.





CFCS
Community Support



51 years

Of service to the community



10,809 youths

Supported through our programs



138,579 meals

Served to kids at our children
and youth programs

Adult, Family, Community and Emergency Support Services

at Catholic Family and Community Services

Catholic Family & Community Services (CFCS) provides essential support through two key departments: **Community & Emergency Support Services (CES)** and **Immigration Legal Services**.

CES operates through Hope House in Dover, Mary's Hands in Morristown, and food pantries in Dover, Franklin, and Paterson.

For over 40 years, CES has been providing critical financial assistance to individuals and families experiencing homelessness or facing the imminent risk of homelessness in Passaic and Morris Counties. CES maximizes support for those in need across our diocese and beyond. This helps reduce the trauma of homelessness, eliminates systemic barriers, and facilitates the transition of individuals into stable housing.

Hope House also offers HIV medical case management, support groups, and transportation for at-risk individuals. **Mary's Hands** focuses on supporting children and families by providing parent consultations, essential baby supplies, and resources for newborns and their mothers. Additionally, Mary's Hands operates an ESL program that educates over 40 adults.





CFCS Emergency Support



\$2.1 Million

Financial Aid Assistance through
Emergency Services Program



31,288 clients

Served through our 3 Food Pantries



41 years

Service to the Community

Food Assistance Services

at Catholic Family and Community Services

Food insecurity remains a significant challenge for many families in our Diocese. In 2024, CFCS provided food assistance to 214,750 individuals through our three food pantry locations in Passaic, Morris, and Sussex Counties. Our food pantries rely on the generosity of private donors, church food drives, the Community Food Bank, individuals, organizations, and various government funding sources to meet the ongoing demand.

Our Morris and Sussex County pantry locations allow clients the dignity of selecting their own food items. In Paterson, our pantry has moved to a temporary location thanks to the support and collaborative efforts of St. Joseph's Health. Demand remains high, and we continue to serve approximately 200 clients per day at the door – which extends to upwards of 4500+ per week when including whole families. In total, CFCS distributed 3,268,169 pounds of food in 2024, reflecting a sustained demand that continues to surpass pre-pandemic levels. This demonstrates the persistent need for food security in the communities we serve and the impact of inflation and the current housing crisis.





Catholic Charities Response to Food Insecurity



214,750

People Fed



3,268,169 lbs

of Food Distributed



24%

Increase from 2021

Immigration Legal Services

at Catholic Family and Community Services

The **Immigration Legal Services** department at Catholic Family & Community Services (CFCS) offers legal advice, assistance, and representation to low-income individuals and families navigating complex immigration matters. Staffed by a full-time immigration attorney, the department served over 207 individuals in 2024, all of whom had a household income of less than \$40,000.

The department provides comprehensive support in a variety of immigration-related areas, including naturalization and citizenship applications, green card adjustments, removal of conditions, representation at USCIS interviews, Deferred Action for Childhood Arrivals (DACA) renewals, and Special Immigrant Juvenile Status (SIJS) petitions. By offering accessible and affordable legal services, CFCS helps individuals and families overcome legal barriers, secure their immigration status, and work toward building stable and hopeful futures as citizens of the United States of America.

Through the dedication of our staff, volunteers, and community partners, CFCS remains committed to reducing barriers, promoting stability, and enhancing the well-being of individuals and families in need.





CFCS
Welcoming the Stranger



207 families

Legal Services provided



53,300,000

Foreign-born people in the United States



2,250,000

Foreign-born people in New Jersey

Senior Programs

at Catholic Family and Community Services

Catholic Family & Community Services (CFCS) supports older adults across Passaic, Morris, and Sussex Counties with programs that promote independence, safety, and social connection.

In Passaic, the **Paterson Adult Day Center (PADC)** and **Senior Activities Program (SAP)** at Governor Paterson Towers serve as vital community hubs. Since 1976, PADC has offered nutritious meals, transportation, socialization, and resource referrals. SAP complements this by engaging seniors in physical, intellectual, and social activities, helping reduce isolation. Together, these programs supported 625 seniors in 2024.

Hope House in Morris County offers the **Hope Connection** personal emergency response system and **Fix It & Chore** services for home cleaning, repairs, and safety assessments.

In Sussex County, **Meals on Wheels** delivered 19,894 meals to 174 homebound seniors, with each delivery including a wellness check. A new **Friendly Visitor** program pairs volunteers with isolated seniors for weekly visits.

CFCS Senior Programs play an essential role in helping older adults age with dignity, security, and community support.





CFCS Support for Seniors



983

Seniors Supported



1,500 hours

Fix-it repairs and chore visits in Morris County



19,894 meals

Provided by our Meals on Wheels Program
in Sussex County

Supportive Services for Veteran Families (SSVF)

at Catholic Family and Community Services

For over a decade, Catholic Family & Community Services (CFCS) has worked to end homelessness among Veterans through its **Supportive Services for Veteran Families (SSVF)** and **Veteran Outreach** programs. Serving seven New Jersey counties, SSVF offers housing assistance, rental support, case management, and wraparound services to help Veterans and their families achieve long-term housing stability.

In 2024, SSVF served 298 Veteran households, ensuring access to safe, affordable housing. Support includes a healthcare navigator, direct legal services, and the Shallow Subsidy program, which covers 50% of rent for up to two years—removing financial barriers and fostering independence.

The Veteran Outreach Program partners with the U.S. Department of Veterans Affairs, state and local agencies, and community organizations to provide coordinated, holistic care.

CFCS remains deeply committed to honoring those who served our country by helping Veterans secure stable housing, access vital services, and rebuild their lives with dignity and support.





CFCS Giving Back to Veterans



\$2,074,247

Agency Wide Direct
Financial Assistance



298

Veterans Supported



7 counties

Supporting seven New Jersey counties



Department for Persons with Disabilities

www.ccpaterson.org/dpd

Executive Director:

Joanna Miller, MNM

1 Catholic Charities Way

Oak Ridge, NJ 07438

Telephone: (973) 406-1100

Fax: (973) 697-9603

Email: info@dpd.org

The Department for Persons with Disabilities (DPD) believes that all life is sacred and every person is a gift from God. DPD helps individuals with intellectual and developmental disabilities in an environment where each person can live happily; work productively; experience acceptance; and be cherished and valued. Our dedicated staff and volunteers work to make the agency's mission a reality. The need for our services is tremendous. There are over 8,000 people with intellectual and developmental disabilities in New Jersey waiting to get into residential programs like ours.

In 2024, DPD celebrated its 59th year of service. Monsignor John Wehrle founded our organization in 1965, starting as a small religious education program for children with special needs. Throughout the last 59 years, DPD has grown and flourished to become one of the largest Catholic agencies providing care for people with disabilities in the United States. We have made a difference in the lives of thousands of people and their families.

Our dedicated Direct Support Professionals are the backbone of our organization and empower people with disabilities to be active, contributing, valued members of our community and to participate fully in life with dignity and respect. We serve a diverse group of people and we encourage them to be active and involved in the community. The people who live in our programs participate in support groups, art and music therapy programs, work independent jobs in the community, drive their own vehicles, and are members of the Boy Scouts of America, Special Olympics, Knights of Columbus, Columbiettes and other service and community organizations.

We take pride in the work we do and strive for excellence. DPD has been fully accredited since 1986 by the Council on Accreditation (COA), a national and international accrediting organization. COA evaluates all of DPD's services compared to national "best practice" standards in both non-profit management and its developmental disabilities programs, considered to be the highest standards in the field. In 2022, DPD achieved a four-year reaccreditation for all services through an expedited process because of meeting all fundamental practice standards.



Residential Services

at Department for Persons with Disabilities

Our residential services are life-long through an individual's adult years, rather than episodic care. Many of the people we serve have lived in and have been supported in our programs for nearly 50 years. We support our individuals to "age in place" for as long as possible; our group homes are accessible for people of all skill sets. DPD provides help to individuals with both medical and behavioral needs throughout their lives. Though assistance with daily life tasks is provided, each person is encouraged to lead independent lives to the fullest extent possible.

DPD's residential programs are inspected annually by the NJ Department of Human Services (DHS) Office of Licensing to ensure compliance with New Jersey Administrative Code 10:44A, Standards for Community Residences for Individuals with Developmental Disabilities. The inspection was completed in June 2024 and DPD was granted full licenses for all residences. Ongoing compliance checks are conducted by the NJ DHS Field Safety and Services Unit through unannounced visits to residential programs throughout the year. DPD's programs have been in compliance based on the findings of all 16 in-person unannounced visits conducted in 2024.





DPD
Residential Services



59 individuals

Provided with Residential Care

.....



24/7

Our programs operate 7 days a week,
24hrs a day

.....



96% satisfaction

Resident and families reported

Group Homes and Apartments

for Department for Persons with Disabilities

Barnet House is a large two-story home in Pompton Lakes. DPD provided 1,813 days of care to 5 residents with intellectual disabilities as well as multiple developmental and physical disabilities.

Calabrese House is a ranch style home in Parsippany. DPD provided 1,810 days of care to 5 residents with intellectual/developmental and physical disabilities.

Columbus House is a large ranch style home in Oak Ridge. DPD provided 2,196 days of care to 6 residents with significant intellectual/developmental disabilities, physical disabilities and autism.

Finnegan House is a large two-story home in Oak Ridge. DPD provided 2,127 days of care to 6 residents with intellectual/developmental disabilities and dual diagnoses.

Fitzpatrick House is a ranch style home in Pompton Lakes. DPD 1,240 provided days of care to 4 residents with intellectual/developmental disabilities and autism.

Giuliano House is a large ranch style home in Oak Ridge. DPD provided 1,452 days of care for 4 residents with intellectual/developmental disabilities and with advanced physical needs.





Murray House is a split-level style home in Clifton. It is the longest existing group home in the state of New Jersey. DPD provided 1,808 days of care to 5 residents with intellectual/ developmental disabilities and dual diagnoses.

Wallace House is a large ranch style home in Sparta. DPD provided 1,435 days of care to 6 residents with intellectual and developmental disabilities.

Walsh House is a large ranch style home located in the Succasunna section of Roxbury Township. This home opened in February of 2018 and is named in honor of Frank and Mimi Walsh. DPD provided 1,803 days of care to 5 residents with intellectual, developmental and physical disabilities and autism.

Wehrlen House is a bi-level home in West Milford and is named in honor of the founder of DPD, Rev. Msgr. John Wehrlen. DPD provided 1,806 days of care to 5 residents with intellectual and developmental disabilities.

Basile Apartments is a supervised apartment program located in three condominium units in Wayne. DPD provided 2,928 days of care to 8 residents with intellectual/developmental disabilities, autism and dual diagnoses.

59 total residents supported, and 20,418 total hours of service provided across all group homes and supervised apartments in 2024.

Gruenert Center

at the Department for Persons with Disabilities

We proudly operate Gruenert Center in Lake Hopatcong. Forty-eight adults with intellectual and developmental disabilities attend Gruenert Center 5 days a week for day habilitation activities offered through our traditional day habilitation program as well as 10 adults in a smaller special needs program for those who need more intensive staff supports. Activities include a variety of skill building groups and activities to build upon independent living, social skills and life skills. This state-of-the-art facility provides a positive atmosphere of comfort and welcome for clients, staff and volunteers. Within the past year, Gruenert has expanded its service day from five hours to six hours to allow more time for programming and day habilitation activities for all. The transition to the longer day has been smooth and all have enjoyed the opportunity to do even more in the community and at the Center.

In May of 2023, the NJ Division of Developmental Disabilities' Provider Performance and Monitoring Unit (PPMU) conducted a three-day compliance audit of Gruenert Center's day habilitation services. Gruenert was awarded a 5-year certificate, the highest level of certification given and one not achieved by many providers in the State of New Jersey.





DPD Day Habilitation



50,085 hours

In-person day habilitation programming
at Gruenert Center to 48 adults

.....



10,681 hours

In-person day habilitation programming at
Gruenert Center, Special Needs to 10 adults

.....



97% satisfaction

Client and family/guardian satisfaction rate

Support Coordination in Sussex County

at the Department for Persons with Disabilities

DPD's **Support Coordination program** (case management services) links individuals to needed supports in their communities throughout Sussex County. This program has grown from its infancy nine years ago to now supporting 222 individuals in 2024.

The Support Coordination program was accredited by the Council of Accreditation (COA) for the first time as part of DPD's accreditation process at the end of 2018 and continues to abide by all of COA's standards of excellence to maintain ongoing re-accreditation.

Our average length of stay (days of service provided) is high. This indicates that once participants are assigned to DPD Support Coordination, they choose to stay with DPD for an extended period of time. In 2024, the Support Coordination department provided 247 days of service. In addition to traditional case management services provided to participants, community resource awareness, identification, and educational activities have been a priority for the support coordination team, and will be ongoing in the upcoming year.





DPD Support Coordination



222 individuals

Provided with Support Coordination services
in Sussex County

.....



86% satisfaction

Client and family/guardian satisfaction rate

.....



2,631 contacts

Monthly home visits, phone contact and
face to face visits

People Need Friends, Pastoral Care, and Compliance

at the Department for Persons with Disabilities

The Volunteer Program at DPD, **“People Need Friends,”** includes 122 volunteers from around the Diocese of Paterson and beyond who contribute their time in a variety of ways, including pet therapy friends, yoga instruction, music therapy, group activities, art therapy and dance, meditation and one-to-one friends.

As a Catholic Charities agency, DPD meets the spiritual needs of clients, staff, and the community through Bible studies, memorial Masses, and nursing home visits. The Director of Pastoral Care offers advocacy and support to former residents in hospitals or care facilities. Mass is held at the Gruenert Center on Holy Days and is open to all. The monthly **C.A.R.E. (Catholic Adult Religious Education)** program at St. Thomas the Apostle Parish provides spiritual enrichment for adults with disabilities and served 60 individuals this year. Many DPD clients volunteer in the community. The Fight for the Right group empowers individuals with disabilities through service. DPD also prioritizes Medicaid compliance, staff development, and timely, accurate documentation for long-term stability.





DPD Volunteers and Compliance



122 volunteers

DPD Volunteers



2,053 hours

Total DPD volunteer hours



84% compliance

Electronic documentation of services provided
approved within 3 days



99% compliance

Electronic documentation of services
provided are billing ready within 10 days

Caritas Gala Celebration

On November 7, 2024, over 300 benefactors, friends, and guests gathered at the Meadow Wood in Morris County to uplift each other and to honor the deserving awardees and their remarkable life work of charity and loving support to the Catholic Charities mission.

2024 Caritas Award Honorees

Diocese of Paterson Bishop's Award:

Robert and Susanne Waldele

Msgr. Mark Giordani Award:

Brian & Mary Jo Sullivan and Family

Fr. Jack Wehrle Award:

Deacon Peter Cistaro

Fr. Norman James O'Connor Award:

Rev. Edward Reading



Save the Date for our 2025 Gala: November 13th, 2025 • The Meadow Wood, Randolph

Support Catholic Charities, Diocese of Paterson

ccpaterson.org/give

Catholic Charities, Diocese of Paterson helps thousands of people each day. Your support allows us to provide help and create hope for those in need throughout our community.

There are many ways that you can make a lasting impact:

- Diocesan faithful are encouraged to give to the Diocesan Ministries Appeal:
www.dopappeal.org
- Make a 1-time tax-deductible contribution
- Make a memorial or in honor of donation to support someone you love
- Attend, sponsor or donate to any of our events throughout the year
- Volunteer your time and talents
- Remember us in your will
- Transfer stock
- Donate food or hygiene items to any of our food pantries
- Give clothing
- Donate your car or boat – CCCars.org or CCBoats.org

And always, keep the Catholic Charities Family in your prayer intentions.
We will pray for you!

Catholic Charities Development Office

info@ccpaterson.org

(973) 737-2077 ext 4030

Donate here



Department for Persons with Disabilities Leadership Team

Executive Director:	Joanna Miller, MNM
Associate Executive Director:	Erin Crowley, MBA/MPA
Agency Nurses:	Anne Williams, RN BSN CDDN Jean McGuire, LPN Fran Ryan, RN
Director of Pastoral Care:	Corinne Kilkeary, BA
Residential Coordinator:	Isabel Almonte-Martel, BA
Director of Support Coordination:	Kris Bulas, BA
Support Coordination Supervisor:	Tascha Spagna, BS
Compliance & Quality Officer:	Mary Laumbach, BA
Walsh House:	Clara List, Director
Barnet House:	Osman Davies
Calabrese House:	Lori Evans, Director
Columbus House:	Stacy Mackerley, Director
Finnegan House:	Lynne Rockstroh, Director
Fitzpatrick House:	Tina Adkins, Director
Giuliano House:	Kelly O'Caiside, Director
Murray House:	Tania Alessio, Director
Wallace House:	Kim Walter, Director
Wehren House:	Cheryl Slate, Director
Basile Apartments:	Geoffrey Ondimu, Director
Gruenert Center:	Carolina Nelson, Director
Gruenert Center Special Needs:	Naana Dei, Director

Straight & Narrow Leadership Team

Executive Director:	Angela Nikolovski, MS, LPC, LCADC
Medical Doctor:	Dr. Hayman Rambaran, MD, ABAM, CDS, DEA
Director of Operations:	Michael Rettagliata
Director of Compliance and Quality Assurance:	Nancy Nakhle, MSW, LCSW
Director of Nursing:	Norma Feliciano, RN
Director of Admissions:	Lisa Bussanich, MA, LCADC, CCS
Director of Family Success Center:	Berenice Lopez, BA
Director of Residential Life Men's Treatment, Detox, Halfway House:	Mark Person, BA, CADC
Support Services Coordinator:	Gloria Price, BSW, CSW
Director of Pastoral Care:	Fr. Charlie Waller
Director of Food Services:	Robert Whitford, AS
Executive Assistance/Quality Insurance:	Rosanna Rosas, BS



Catholic Family & Community Services Leadership Team

Executive Director, CFCS

Joseph Murray, M. Ed

Director of Targeted Evaluation Team

Danielle Cuskey, MSW, LSW

Case Management - Unit Coordinator

Nell Korman

Program Director EMDC

Sladjana Cvijanovic

Program Director EMDN

Craig Wachsman

Program Director FC 2

Gloria Bodker

Director of Youth Risk Reduction Programs

Delia Rosario, MSW, LSW, DRCC

Director of Emergency Support Services

Ariel Alonso

Director of Food Pantries

Carlos Roldan

Site Director - Hope House

Karina Calabuig

Director of Pastoral Ministry, Volunteers, and Community Outreach

Sr. Maureen Sullivan, SC

Coordinator, Mary's Hands

Teresa Prendergast

Director of Veteran Services

Melissa Schaber

Director of Outreach for Veteran Services

David Pearson

Director of Senior Programs

Lynn Gaffney

Site Director - Franklin, MOW

Gwendolyn Federico-Malone

Accreditation and Data Director

Jonathan Jacob, MPA PQI

Operations Coordinator

Chris Moscou

Systems Administrator, CFCS

Tasneem Chandabhai, BA

Uniting Community Through Flagship Events

Each year, the Catholic Charities Diocese of Paterson brings people together through a series of flagship events that celebrate our mission, raise vital funds, and honor the shared values of faith, service, and community. In 2024, these events continued to grow in impact and participation, serving as both celebrations and catalysts for our charitable work.



The **14th Annual Tank Pull Challenge**, co-hosted with the Knights of Columbus, started our Summer. Dozens of teams gathered in Clifton to literally pull a 80,000-pound tank—symbolizing the weight our veterans carry and our shared commitment to lifting them up. This event not only raised awareness and support for veterans and their families but also embodied the spirit of unity and gratitude that defines our mission.

Our **50th Annual Wiegand Farm Golf Outing** in June was a remarkable day of fellowship, fun, and philanthropy. Held at Crystal Springs Resort, this beloved tradition brought together over 250 golfers and sponsors to support individuals with intellectual and developmental disabilities. Thanks to their generosity, we raised crucial funds that directly support our Department for Persons with Disabilities and its life-enriching programs.





The **3rd Annual Beefsteak** for Straight and Narrow helped us get the broader community around us closer to an issue that destroys so many families: we had fun and mobilized against addiction, celebrating this agency's long standing fight.

We also marked key milestones with events like the **Corpus Christi Food Drive**, which mobilized hundreds of parishioners to provide thousands of meals to our neighbors in need, and the **Caritas Gala**, in November, where we honored exemplary individuals and organizations who embody the heart of service.



Each of these gatherings does more than raise funds—they raise hope. They remind us that when we come together, we can move mountains, feed the hungry, house the homeless, and restore dignity to the vulnerable. Our flagship events continue to be a cornerstone of connection, advocacy, and transformation in the communities we serve.



Catholic Charities, Diocese of Paterson

ccpaterson.org

Main Office: 777 Valley Road, Clifton, NJ 07013 • info@ccpaterson.org • (973) 737-2077

Board President: Rev. Martin Glynn • **Chief Executive Officer:** Scott Milliken, MPA • **Chief Financial Officer:** Mukesh Saxena, CPA
Director of Human Resources: Reina Rivas, LCSW, LCADC, SHRM-CP • **Development Director:** Hazel Yaptangco, MBA • **Controller:** Dimpal Patel, CPA

Straight and Narrow

ccpaterson.org/sn

Executive Director: Angela Nikolovski, MS, LPC, LCADC

Main Office
508 Straight St
Paterson, NJ 07501

info@straightandnarrowinc.org
(973) 345-6000

Services for those in Recovery:
Men's Residential Substance Abuse Treatment
Women's Residential Substance Abuse Treatment
Mommy and Me Program
Detox Hospital
O'Connor Hall Halfway House
Adult Outpatient Treatment
Monsignor Wall Medication Assisted Treatment Center
Monsignor Mark Giordani Center for Rehabilitation
Doxy.me Remote Telemedicine
CCFIT Program at the O'Connor Wellness Center

Additional Community Services:
Supportive Housing
Childcare Centers
Family Success Center
Pastoral Care and the Straight and Narrow Choir
Adult Medical Daycare

Catholic Family and Community Services

ccpaterson.org/cfcs

Executive Director: Joseph Murray, M. Ed.

Main Office
435 Main Street
Paterson, NJ 07501

cfcsinfo@catholiccharities.org
(973) 279-7100

Early Intervention Programs
Early Learning Programs
Child Nutrition Program
Chore Program
Teen and Youth Services
Legal Immigration Services
Community and Emergency Support Programs
Senior Activities Program
Senior Foodbank Program
Senior Adult Day Center
Senior Fix-It Program
Meals on Wheels
Mary's Hands
Supportive Services for Veteran Families
Veteran Clothing Closets
Services for People with HIV/AIDS
Pastoral Care

Food Pantries and Clothing Closets:
- Hope House, Morris County
- Father English Center, Passaic County
- Partnership for Social Services, Sussex County

Department for Persons with Disabilities

ccpaterson.org/dpd

Executive Director: Joanna Miller, MNM

Main Office
1 Catholic Charities Way
Oak Ridge, NJ 07438

info@dpd.org
(973) 406-1100

The Department for Persons with Disabilities helps individuals with intellectual and developmental disabilities through:

Group Homes
Supervised Apartments
Gruenert Center, Adult Day Habilitation Program
Gruenert Center, Special Needs Program
Case Management Services
(Support Coordination, Sussex County)
Recreational Opportunities
Saturdays at the Center Recreation and Learning Program
Religious Education
Pastoral Care

@ccharitiespat



Catholic Charities
Diocese of Paterson
www.CCPaterson.org